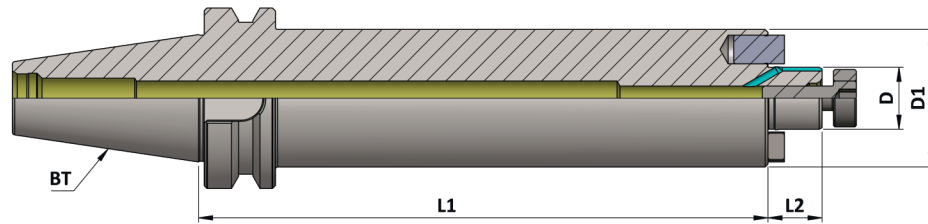


Maximum Run out of the External Dia with respect to the External Taper 0.005 mm

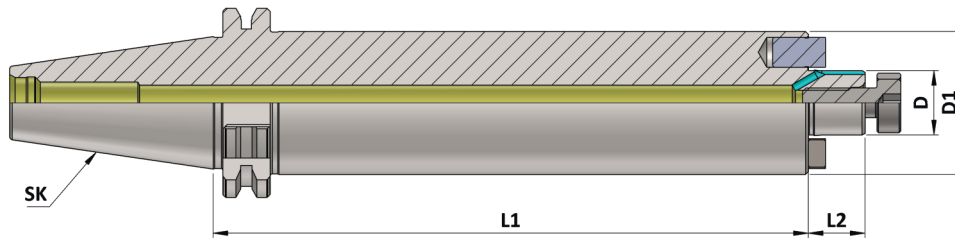


BT (MAS 403) (FMH-K - AD - AV. SP.S)

Item Name	Item Code	ISO	D	D1	L1	L2
BT40 FMH-K16 200 AD AV SP.S	K10102131239271	40	16	38	200	17
BT40 FMH-K16 300 AD AV SP.S	K10102131183271	40	16	38	300	17
BT40 FMH-K22 200 AD AV SP.S	K10102132239271	40	22	48	200	19
BT40 FMH-K22 300 AD AV SP.S	K10102132183271	40	22	48	300	19
BT40 FMH-K27 200 AD AV SP.S	K10102133239271	40	27	58	200	21
BT50 FMH-K16 200 AD AV SP.S	K10103131239271	50	16	38	200	17
BT50 FMH-K16 300 AD AV SP.S	K10103131183271	50	16	38	300	17
BT50 FMH-K16 400 AD AV SP.S	K10103131540271	50	16	38	400	17
BT50 FMH-K22 200 AD AV SP.S	K10103132239271	50	22	48	200	19
BT50 FMH-K22 300 AD AV SP.S	K10103132183271	50	22	48	300	19
BT50 FMH-K22 400 AD AV SP.S	K10103132540271	50	22	48	400	19
BT50 FMH-K27 200 AD AV SP.S	K10103133239271	50	27	58	200	21
BT50 FMH-K27 300 AD AV SP.S	K10103133183271	50	27	58	300	21
BT50 FMH-K27 400 AD AV SP.S	K10103133540271	50	27	58	400	21
BT50 FMH-K32 300 AD AV SP.S	K10103134183271	50	32	78	300	24

Note: All Dimensions are in mm

Maximum Run out of the External Dia with respect to the External Taper 0.005 mm

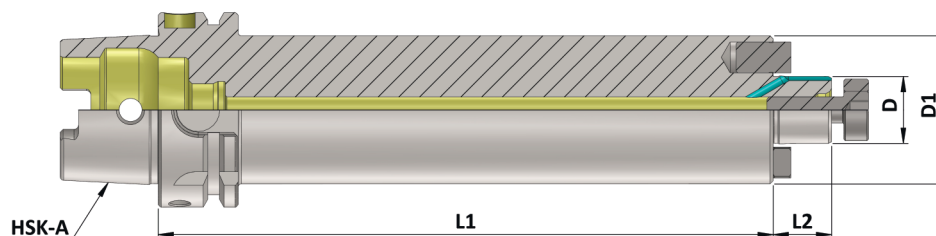


SK (DIN 69871) (FMH-K - AD - AV. SP.S)

Item Name	Item Code	SK	D	D1	L1	L2
SK40 FMH-K16 200 AD AV SP.S	K10104131239271	40	16	38	200	17
SK40 FMH-K16 300 AD AV SP.S	K10104131183271	40	16	38	300	17
SK40 FMH-K22 200 AD AV SP.S	K10104132239271	40	22	48	200	19
SK40 FMH-K22 300 AD AV SP.S	K10104132183271	40	22	48	300	19
SK40 FMH-K27 200 AD AV SP.S	K10104133239271	40	27	58	200	21
SK50 FMH-K16 200 AD AV SP.S	K10105131239271	50	16	38	200	17
SK50 FMH-K16 300 AD AV SP.S	K10105131183271	50	16	38	300	17
SK50 FMH-K16 400 AD AV SP.S	K10105131540271	50	16	38	400	17
SK50 FMH-K22 200 AD AV SP.S	K10105132239271	50	22	48	200	19
SK50 FMH-K22 300 AD AV SP.S	K10105132183271	50	22	48	300	19
SK50 FMH-K22 400 AD AV SP.S	K10105132540271	50	22	48	400	19
SK50 FMH-K27 200 AD AV SP.S	K10105133239271	50	27	58	200	21
SK50 FMH-K27 300 AD AV SP.S	K10105133183271	50	27	58	300	21
SK50 FMH-K27 400 AD AV SP.S	K10105133540271	50	27	58	400	21
SK50 FMH-K32 300 AD AV SP.S	K10105134183271	50	32	78	300	24

Note: All Dimensions are in mm

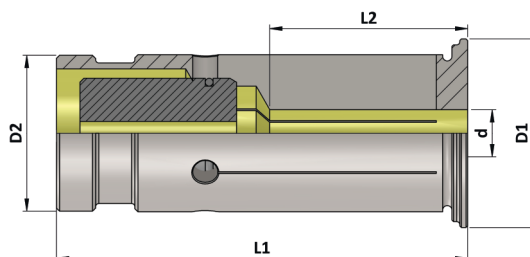
Maximum Run out of the External Dia with respect to the External Taper 0.005 mm



HSK-A (DIN 69893 - 1) (FMH-K - AV. SP.S)

Item Name	Item Code	HSK-A	D	D1	L1	L2
HSK-A 63 FMH-K16 200 AV SP.S	K10305131239270	63	16	38	200	17
HSK-A 63 FMH-K16 300 AV SP.S	K10305131183270	63	16	38	300	17
HSK-A 63 FMH-K22 200 AV SP.S -	K10305127239260	63	22	48	200	19
HSK-A 63 FMH-K22 300 AV SP.S -	K10305127183260	63	22	48	300	19
HSK-A 63 FMH-K27 200 AV SP.S	K10305133239270	63	27	58	200	21
HSK-A 100 FMH-K16 200 AV SP.S	K10168131239270	100	16	38	200	17
HSK-A 100 FMH-K16 300 AV SP.S	K10168131183270	100	16	38	300	17
HSK-A 100 FMH-K16 400 AV SP.S	K10168131540270	100	16	38	400	17
HSK-A 100 FMH-K22 200 AV SP.S	K10168132239270	100	22	48	200	19
HSK-A 100 FMH-K22 300 AV SP.S	K10168132183270	100	22	48	300	19
HSK-A 100 FMH-K22 400 AV SP.S	K10168132540270	100	22	48	400	19
HSK-A 100 FMH-K27 200 AV SP.S	K10168133239270	100	27	58	200	21
HSK-A 100 FMH-K27 300 AV SP.S	K10168133183270	100	27	58	300	21
HSK-A 100 FMH-K27 400 AV SP.S	K10168133540270	100	27	58	400	21
HSK-A 100 FMH-K32 300 AV SP.S	K10168134183270	100	32	78	300	24

Note: All Dimensions are in mm

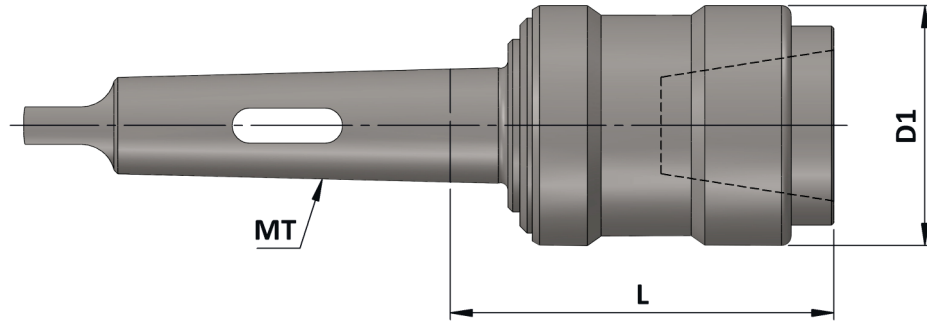


Reduction Sleeve Seal (RS - Seal)

(Concentricity within 0.005 mm)

Item Name	Item Code	d	D1	D2	L1	L2
RS SEAL 12 X 3	K10251209556127	3	16.50	12	48	14
RS SEAL 12 X 4	K10251209528127	4	16.50	12	48	15
RS SEAL 12 X 5	K10251209561127	5	16.50	12	48	18
RS SEAL 12 X 6	K10251209342127	6	16.50	12	48	25
RS SEAL 12 X 8	K10251209314127	8	16.50	12	48	26
RS SEAL 20 X 3	K10251217323127	3	29	20	52.5	14
RS SEAL 20 X 4	K10251217434127	4	29	20	52.5	15
RS SEAL 20 X 5	K10251217442127	5	29	20	52.5	18
RS SEAL 20 X 6	K10312185301127	6	29	20	52.5	25
RS SEAL 20 X 7	K10251217426127	7	29	20	52.5	25
RS SEAL 20 X 8	K10251217443127	8	29	20	52.5	30
RS SEAL 20 X 9	K10251217415127	9	29	20	52.5	30
RS SEAL 20 X 10	K10251217416127	10	29	20	52.5	33
RS SEAL 20 X 11	K10251217444127	11	29	20	52.5	33
RS SEAL 20 X 12	K10251217445127	12	29	20	52.5	34
RS SEAL 20 X 13	K10251217417127	13	29	20	52.5	34
RS SEAL 20 X 14	K10251217418127	14	29	20	52.5	34
RS SEAL 20 X 15	K10251217419127	15	29	20	52.5	40
RS SEAL 20 X 16	K10312195301127	16	29	20	52.5	40
RS SEAL 32 X 6	K10251229324127	6	39	32	63.5	25
RS SEAL 32 X 8	K10251229325127	8	39	32	63.5	25
RS SEAL 32 X 10	K10251229322127	10	39	32	63.5	33
RS SEAL 32 X 12	K10251229327127	12	39	32	63.5	34
RS SEAL 32 X 14	K10251229326127	14	39	32	63.5	34
RS SEAL 32 X 16	K10251229420127	16	39	32	63.5	40
RS SEAL 32 X 18	K10251229501127	18	39	32	63.5	40
RS SEAL 32 X 20	K10251229554127	20	39	32	63.5	40
RS SEAL 32 X 25	K10251229481127	25	39	32	63.5	42

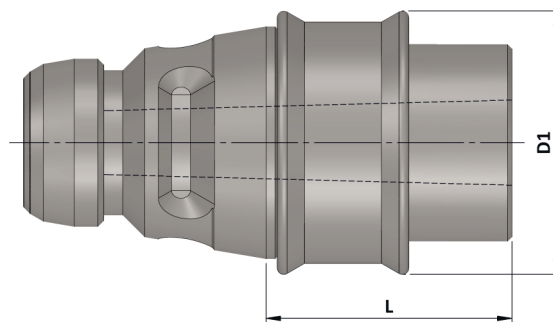
Note: All Dimensions are in mm



QCDTC - With Morse Taper Shank (MT)

Item Name	Item Code	Suitable Adaptor	D1	L
MT 3 B QCDTC3	K11202231193	SIZE3	60	88
MT 4 B QCDTC4	K11213232193	SIZE4	72	102

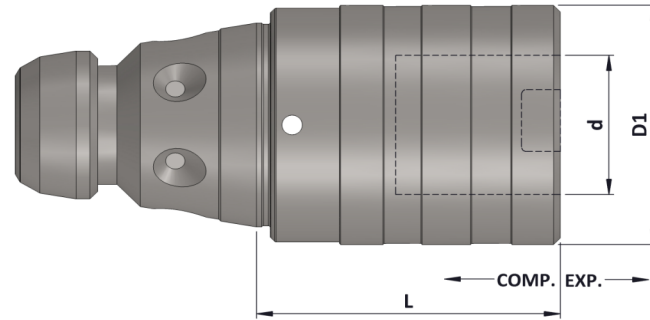
Quick Change Drill Adaptor (QCDA)



QCDA../MT..

Item Name	Item Code	Suitable Chuck	D1	L
QCDA3 MT 3	K11121113193	QCDTC3	50	38.5
QCDA4 MT 4	K11122114193	QCDTC4	60	56

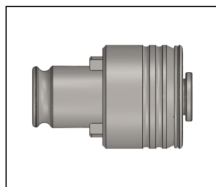
Note: All Dimensions are in mm



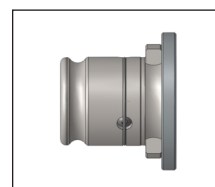
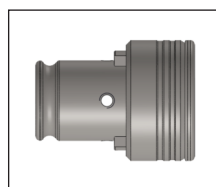
QCTAH../..

Item Name	Item Code	Capacity	Suitable Adaptor	Suitable Chuck	Comp.	Exp.	d	D1	L
QCTAH3 /2	K11126115193	M8 - M20	KWES2B	QCDC3	12.5	12.5	31	53	66
QCTAH3 /3	K11126116193	M14 - M33	KWES3B	QCDC3	20	20	48	78	126
QCTAH4 /2	K11127115193	M8 - M20	KWES2B	QCDC4	12.5	12.5	31	53	66
QCTAH4 /3	K11127116193	M14 - M33	KWES3B	QCDC4	20	20	48	78	121
QCTAH4 /4	K11127117193	M22 - M48	KWES4B	QCDC4	22.5	22.5	60	96	135

Accessories:



Tap Adaptor KWES..B & KWESK..B



Tap Adaptor Reduction Socket KWRE

Note: All Dimensions are in mm